

Strand7 R3 Setup Guide

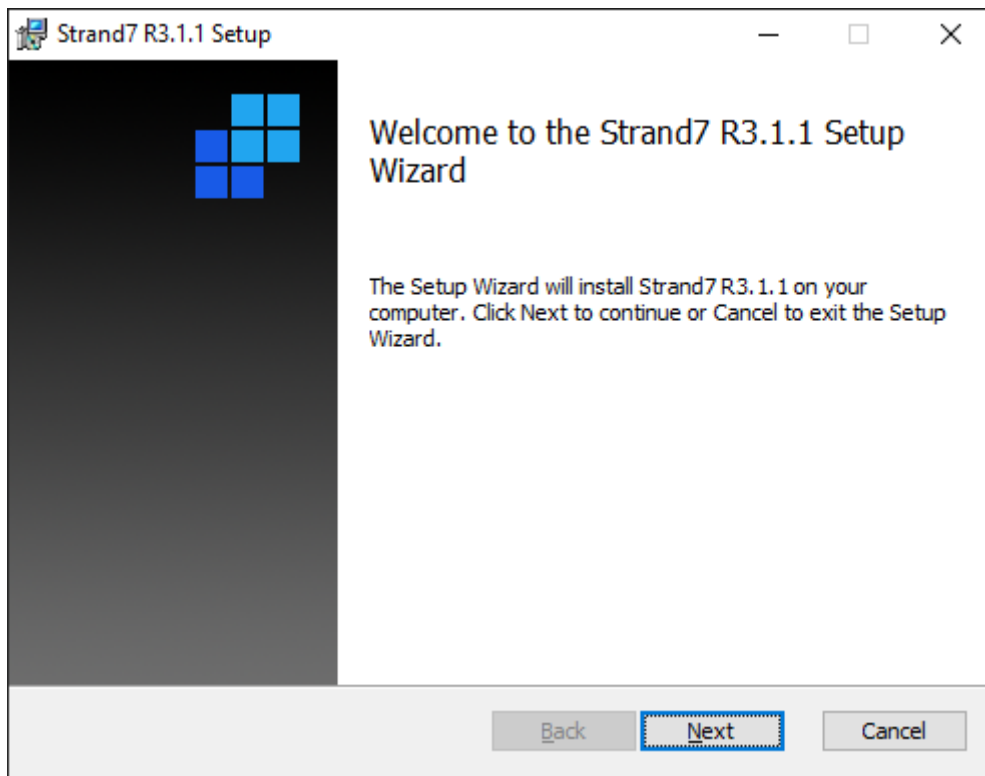
Document Relevance

This document applies to Strand7 Releases **3.1.x**.

Installing Strand7

The Strand7 R3.1.x download is issued as an MSI installation package.

Run the MSI installer to install Strand7 on a local drive. Follow the prompts to complete the installation of the software. If an older R3.1.x installation is already installed then it will be uninstalled at the start of the installation. This installer will not uninstall R2.4.x and earlier Strand7 versions.



Strand7 can run in either standalone mode or network mode; the mode depends on the type of USB hardware lock – standalone locks are purple, network locks are red. Strand7 must now be configured before it can be run.

Setting up Strand7 in Standalone Mode

Running Strand7 in standalone mode requires a purple USB hardware lock. The standalone hardware lock must be connected to the computer that will run Strand7.



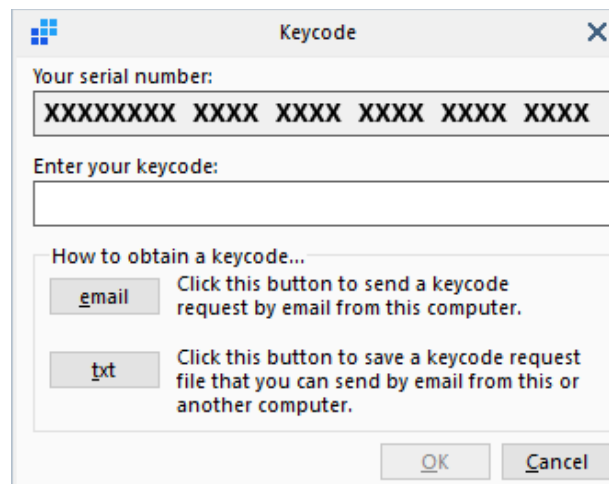
Step 1 (Standalone) – Install HASP drivers (if not already installed)

For the hardware lock to be recognised by the computer, drivers must first be installed. If drivers have not yet been installed, they can be installed by downloading and installing Sentinel LDK Runtime. Do not connect the hardware lock until instructed.

1. Download the latest drivers (Sentinel LDK Runtime) from the Strand7 website. The download link is at the bottom of the <https://www.strand7.com/st7update> page.
2. Unzip the downloaded file and then run HASPUserSetup.exe. Follow the instructions on the screen to complete the installation.
3. Plug in the standalone hardware lock and wait for Windows to complete the installation of the driver. When the driver is successfully installed the hardware lock will light up.

Step 2 (Standalone) – Obtain and enter keycode

With the hardware lock attached and drivers installed, Strand7 can now be run. Run Strand7, via the shortcut on the Desktop or via the shortcut in the Windows Start Menu. On first run, Strand7 will display the dialog below.



The dialog shows your unique serial number and a text box to enter your keycode. If your computer has email, you can click the email option which will automatically create an email with all the required information, ready for you to send for the request of a keycode. Please do not edit this email, but simply send it as is. Alternatively, click the txt option to save the keycode request to a text file. Send this text file as an attachment to the email address indicated in the file.

You will receive your keycode by reply email. Once you have a keycode, enter it into the dialog shown above and click OK. Note that keycodes are specific to the computer which generated the serial number. You can use another computer to send the keycode request email with the txt option above, but the serial number must be from the computer on which Strand7 is to run.

Setting up Strand7 in Network Mode

Running Strand7 in network mode requires a red USB hardware lock. The hardware lock must be connected to a server computer running the Aladdin HASP Licence Manager service. This server computer must be network accessible from all client computers running Strand7.



Step 1 (Network) - Install HASP drivers on licence server (if not already installed)

For the hardware lock to be recognised by the licence server computer, drivers must first be installed on the server. If drivers have not yet been installed, they can be installed by downloading and installing Sentinel LDK Runtime. Do not connect the hardware lock until instructed.

1. Download the latest drivers (Sentinel LDK Runtime) from the Strand7 website. The download link is at the bottom of the <https://www.strand7.com/st7update> page.
2. Unzip the downloaded file and then run HASPUserSetup.exe. Follow the instructions on the screen to complete the installation.
3. Plug in the network hardware lock and wait for Windows to complete the installation of the driver. When the driver is successfully installed the hardware lock will light up.

Step 2 (Network) – Install licence manager on licence server (if not already installed)

Strand7 uses Aladdin HASP Licence Manager for managing network licences. The licence manager runs as a service and must be installed on a server computer which is network accessible from all client computers running Strand7.

1. Download Aladdin HASP Licence Manager from the Strand7 website. The download link is at the bottom of the <https://www.strand7.com/st7update> page.
2. Unzip the downloaded file and then run lmsetup.exe. Follow the instructions on the screen to complete the installation and select **install as a service** when prompted.
3. Open Control Panel/Administrative Tools/Services and check that the **HASP Loader** service is running. Alternatively, check that the **nhsrvic.exe** process is present in Task Manager.

The licence manager installer will create two inbound firewall rules named **HASP LM** in Windows Firewall. These are for inbound connections on TCP port 475 and UDP port 475. Strand7 accesses the licence server on **UDP port 475**.

Step 3 (Network) – Select a network configuration option

There are three configurations available for running Strand7 in network mode. In all three configurations, Strand7 obtains a licence from the licence server computer that is running the Licence Manager. The difference between the three configurations is in where the client finds the Strand7 executable and the activation keycode.

In **Network Configuration A**, Strand7 is installed on a shared network drive. Each client computer runs Strand7 directly from the shared network drive. Installation and configuration are performed only once. A single keycode stored on the shared network drive activates Strand7 for all client computers. The advantage of this option is the simplicity in setting up each client.

In **Network Configuration B**, Strand7 is installed on both a shared network drive and on the local drive of each client computer. Although the client computer will be able to run Strand7 from the shared network drive (as in configuration A), the main purpose of configuration B is to enable the client computer to run Strand7 from the local drive – the advantage of this is that it will reduce the time to load Strand7 every time it is run. The installation on the local drive is configured so that it uses the keycode on the shared network drive, therefore only one keycode is required for all installations.

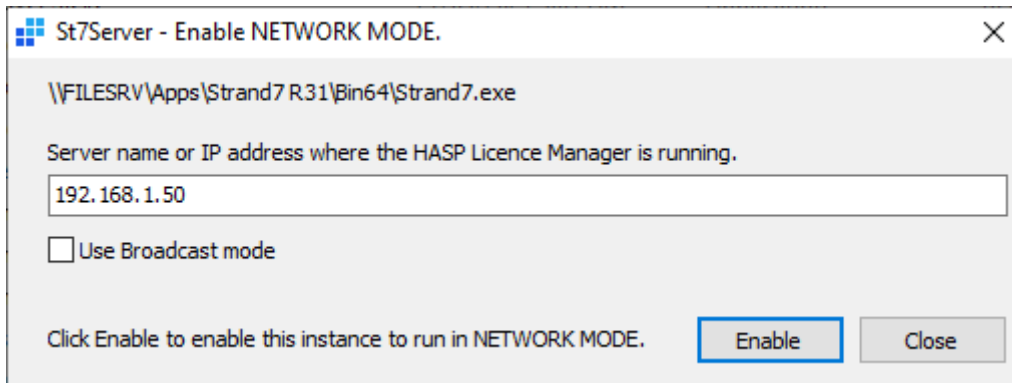
In **Network Configuration C**, Strand7 is installed on the local drive of each client computer only. Installation and configuration must be performed on each client computer. Each client computer will require a separate keycode to activate Strand7. The advantage of this configuration compared with the other two is that additional client installations do not need access to the shared network drive.

Setting up Network Configuration A

Strand7 is installed on a shared network drive. Each client computer runs Strand7 directly from the shared network drive. Installation and configuration are only performed once. A single keycode activates Strand7 for all client computers.

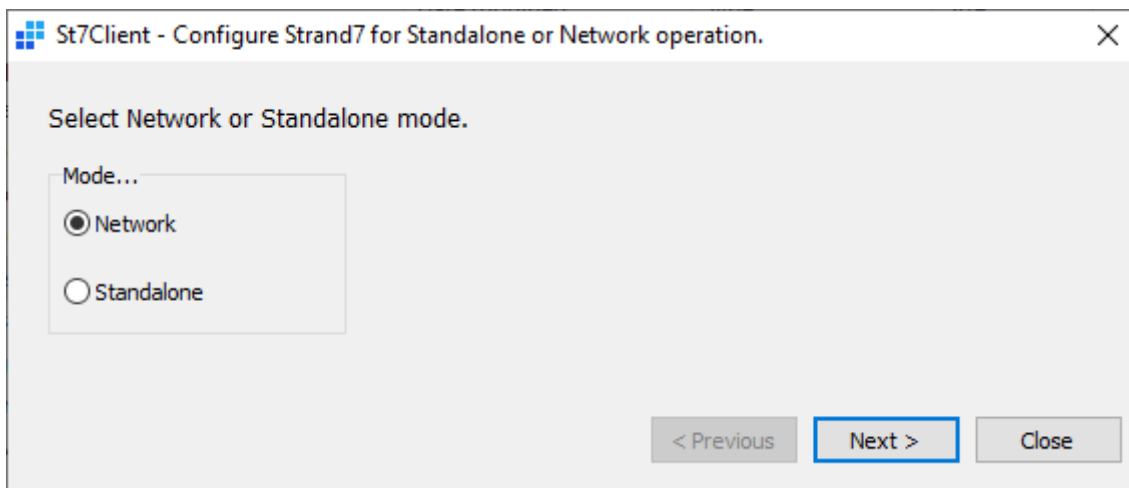
The Strand7 installer does not allow installation to a shared network drive however it is possible to do so manually by first installing to a local drive and then copying the installed files to the shared network drive.

1. Install Strand7 to the default location; usually this is C:\Program Files\Strand7 R31.
2. Create a folder for Strand7 on your shared network drive, say \\FILESRV\Apps\Strand7 R31.
3. Copy the folders inside C:\Program Files\Strand7 R31 to \\FILESRV\Apps\Strand7 R31. Do not copy the shortcuts as they will not be valid.
4. Copy the folders inside C:\ProgramData\Strand7 R31 to \\FILESRV\Apps\Strand7 R31. The locally installed Strand7 can now be uninstalled if required.
5. Run the \\FILESRV\Apps\Strand7 R31\Bin64\St7Server.exe program located on the shared network drive.

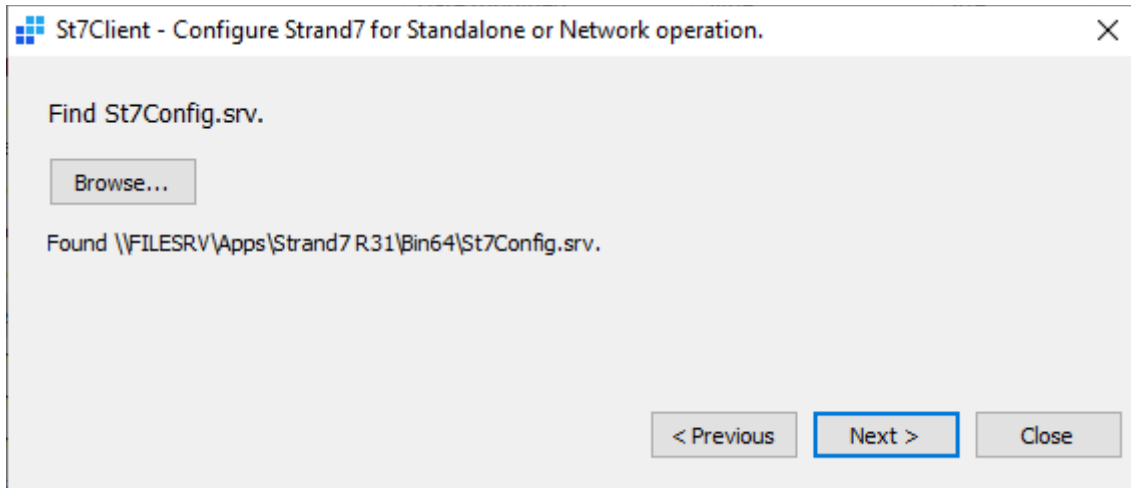


Specify the server name or IP address of the licence server, uncheck the Use Broadcast mode option and click Enable. If the server address is not known then you may leave the server name field blank and select the Use Broadcast mode option. Specifying the address of the licence server is preferable to the Use Broadcast mode option which can be unreliable and may not work on all local area networks or when using VPN.

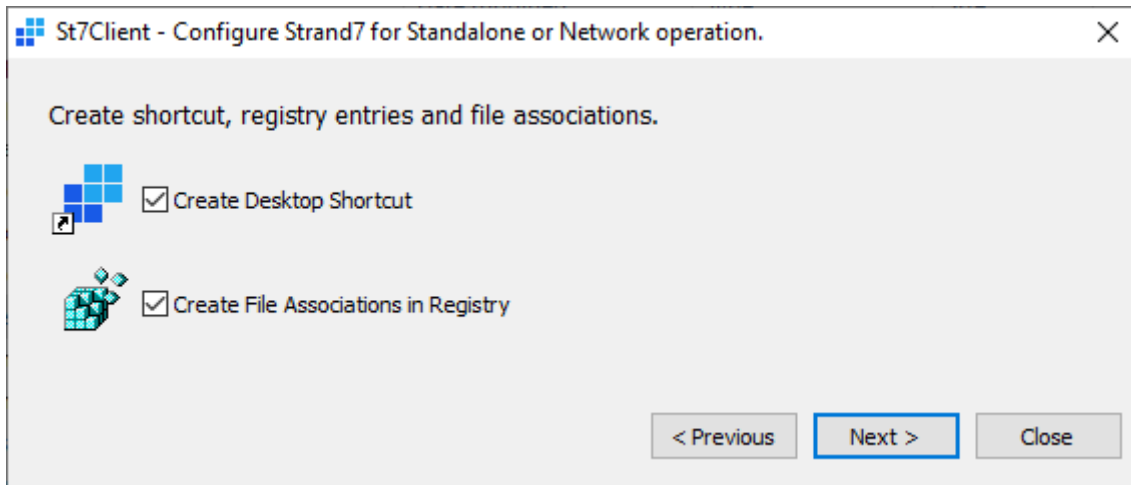
6. Run the \\FILESRV\Apps\Strand7 R31\Bin64\St7Client.exe program located on the shared network drive.



Set Mode... to Network. Click Next.



Click Browse... and locate the \\FILESRV\Apps\Strand7 R31\Bin64\St7Config.srv file which was created in Step 5. Click Next.



Select Create Desktop Shortcut and Create File Associations in Registry. Click Next. Click Close.

7. Run \\FILESRV\Apps\Strand7 R31\Bin64\Strand7.exe on the shared network drive. Obtain and enter the keycode to activate Strand7.

Strand7 is now setup to run from any client computer that has access to the shared network drive. If a Desktop Shortcut or File Associations are required on a client computer, repeat Step 6 on the client computer.

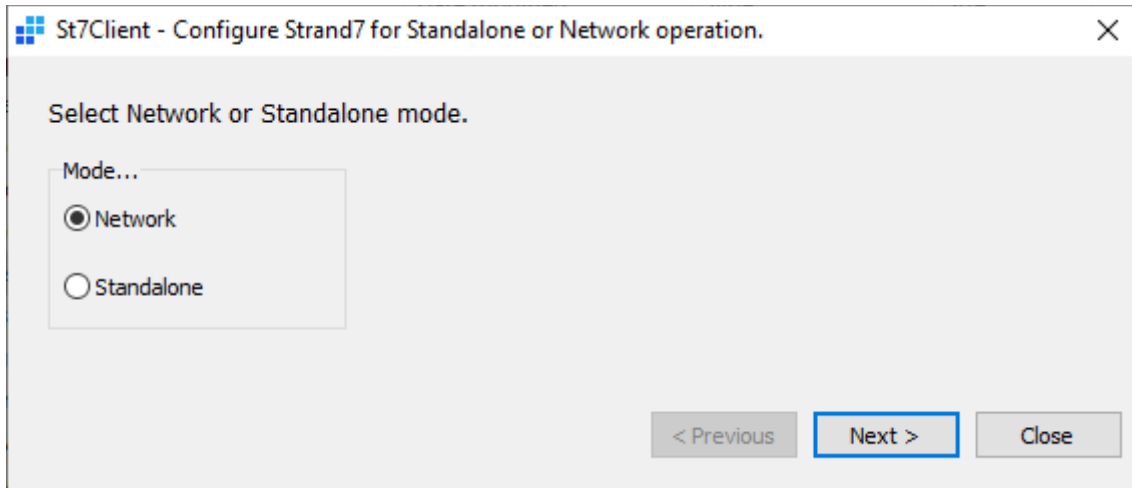
Setting up Network Configuration B

Strand7 is installed on both a shared network drive and on the local drive of each client computer. Each client computer will generally run Strand7 from the local drive. The installation on the local drive is configured so that it uses the keycode on the shared network drive. Only one keycode is required for all installations.

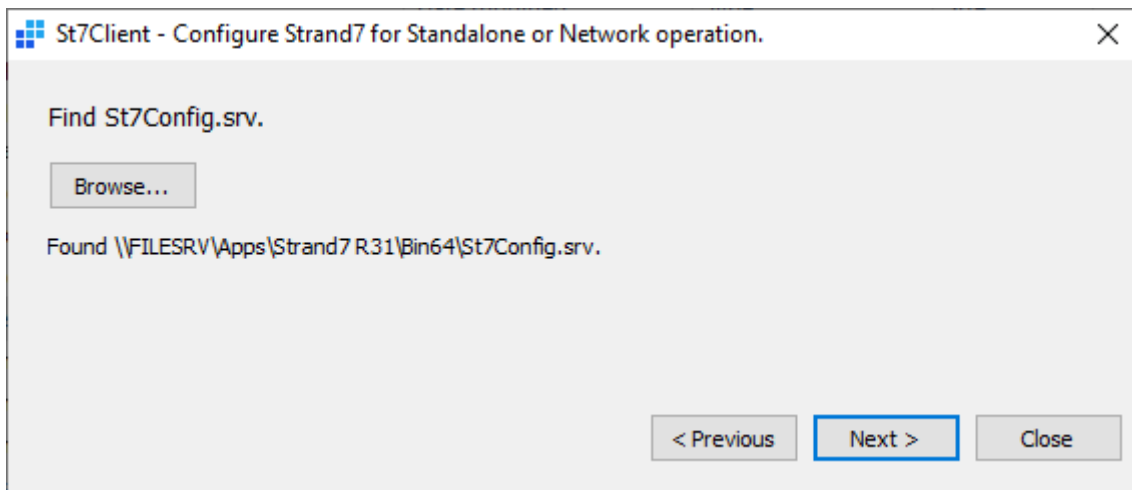
1. Install and configure Strand7 on a shared network drive by following the instructions for **Setting up Network Configuration A**. Complete all steps and test that Strand7 runs successfully before proceeding.

On each client computer:

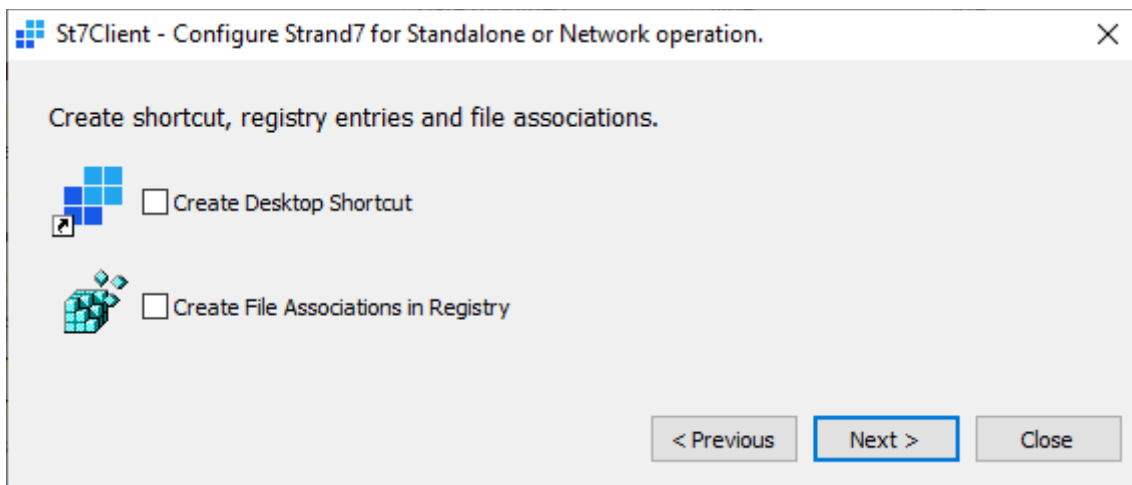
2. Install Strand7 on the client computer.
3. Run the C:\Program Files\Strand7 R31\Bin64\St7Client.exe program located on the client computer.



Set Mode... to Network. Click Next.



Click Browse... and locate the \\FILESRV\Apps\Strand7 R31\Bin64\St7Config.srv file which belongs to the shared network installation. Click Next.



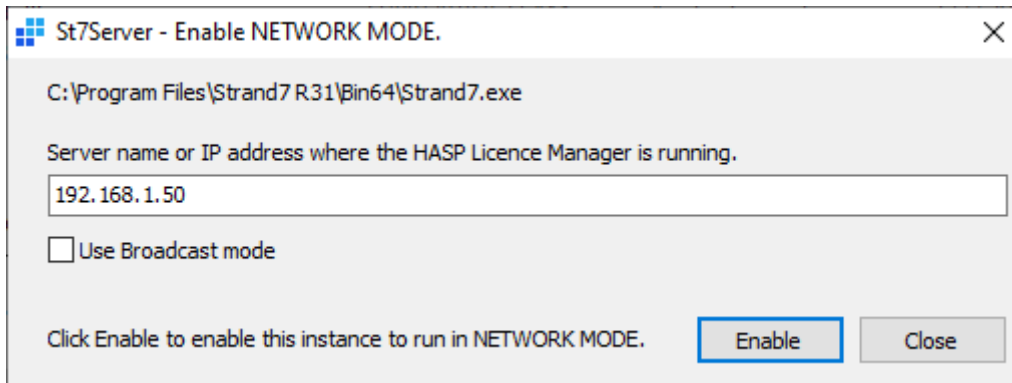
Uncheck the Create Desktop Shortcut and Create File Associations in Registry options as they were already created by the installer in Step 2. Click Next. Click Close.

Strand7 will now run on the client computer and use the keycode from the shared network drive installation.

Setting up Network Configuration C

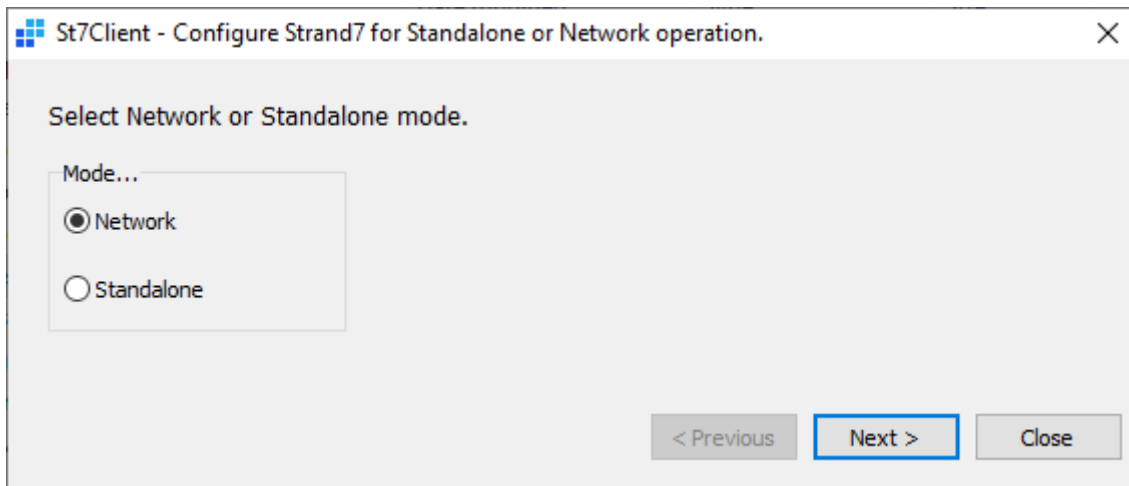
Strand7 is installed on the local drive of each client computer only. Installation and configuration must be performed on each client computer. Each client computer will require a separate keycode to activate Strand7.

1. Install Strand7 on the client computer.
2. Run the C:\Program Files\Strand7 R31\Bin64\St7Server.exe program located on the client computer.

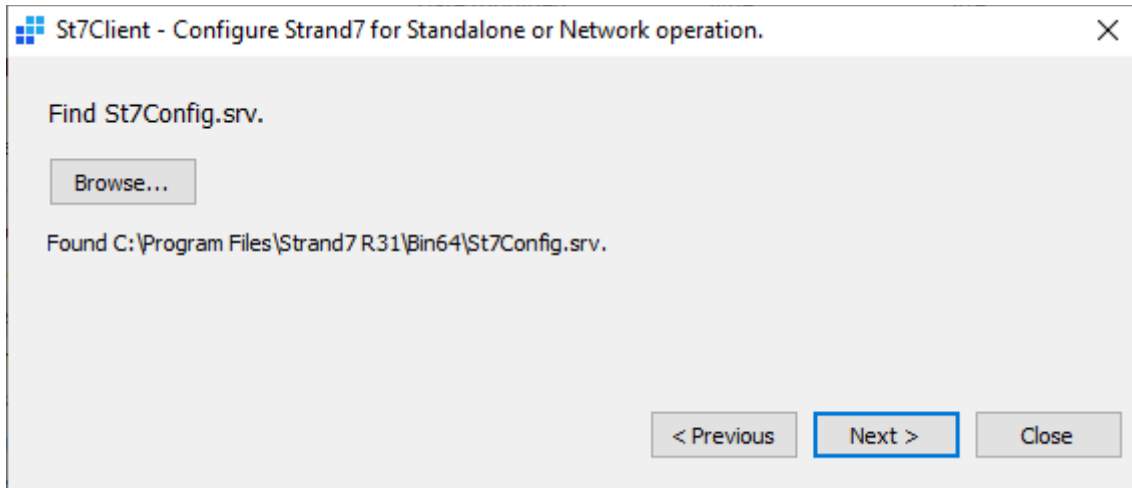


Specify the server name or IP address of the licence server, uncheck the Use Broadcast mode option and click Enable. If the server address is not known then you may leave the server name field blank and select the Use Broadcast mode option. Specifying the address of the licence server is preferable to the Use Broadcast mode option, which can be unreliable and may not work on all local area networks or when using VPN.

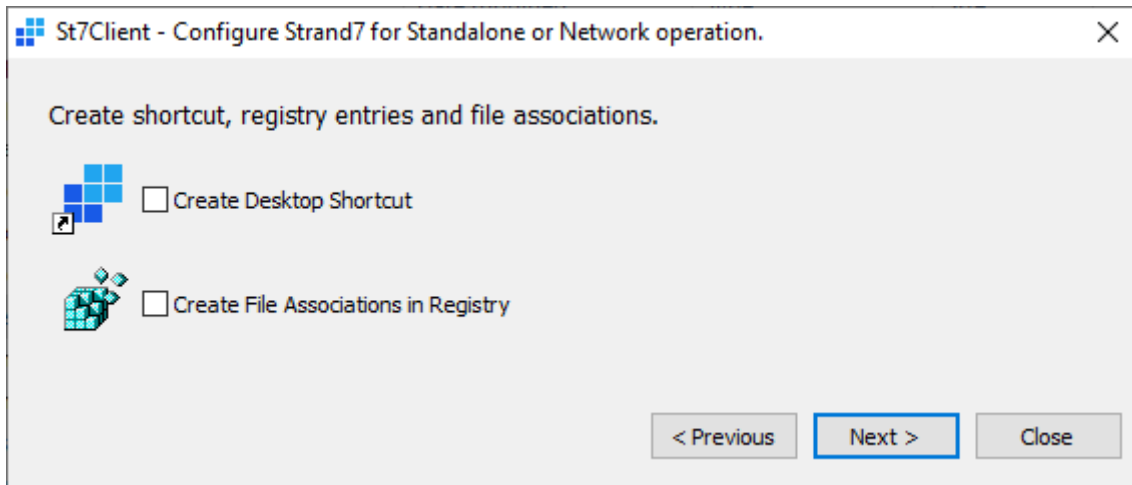
3. Run the C:\Program Files\Strand7 R31\Bin64\St7Client.exe program located on the client computer.



Set Mode... to Network. Click Next.



Click Browse... and locate the C:\Program Files\Strand7 R31\Bin64\St7Config.srv file which was created in Step 2. Click Next.



Uncheck the Create Desktop Shortcut and Create File Associations in Registry options as they were already created by the installer in Step 1. Click Next. Click Close.

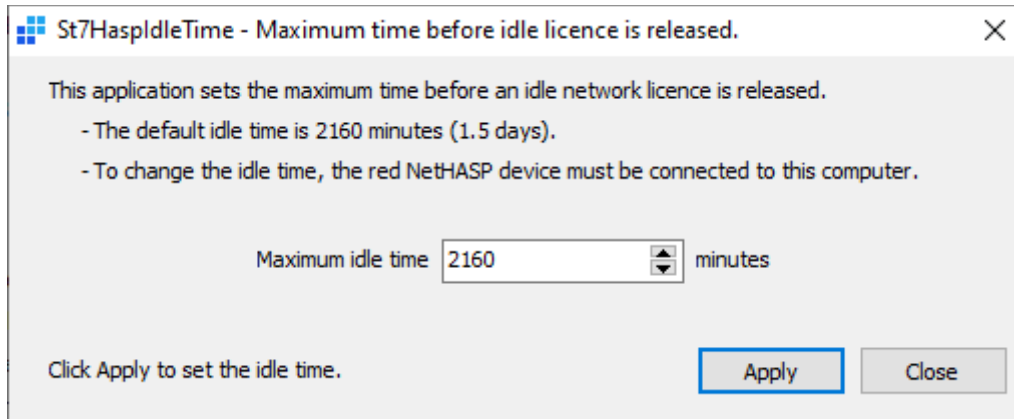
4. When you run Strand7 for the first time you will be prompted to enter a keycode. Obtain and enter the keycode to activate Strand7.

Changing the Maximum Idle Time for Network Licences

If Strand7 terminates abnormally or the network connection to the licence server is interrupted, a licence seat may be lost. The licence is no longer in use however the licence manager holds the licence in reserve for the computer that was using it. To deal with this problem, the licence manager will release a held licence making it available to other users after a specified period of inactivity. This period of inactivity is referred to as the maximum idle time.

The default maximum idle time for a licence seat is 1.5 days. The tool provided will allow this value to be changed. Setting the maximum idle time too low may cause problems for users who are actively using a licence, as their licence could be released and then allocated to another user once the number of licence seats has been exhausted.

1. On the licence server computer with the network hardware lock attached, run the St7HaspIdleTime.exe program. This program is included in the Strand7 installation and can be found in the Strand7 R31\Bin64 folder. For a default installation this is C:\Program Files\Strand7 R31\Bin64\St7HaspIdleTime.exe.



2. Set the desired maximum idle time and click Apply.